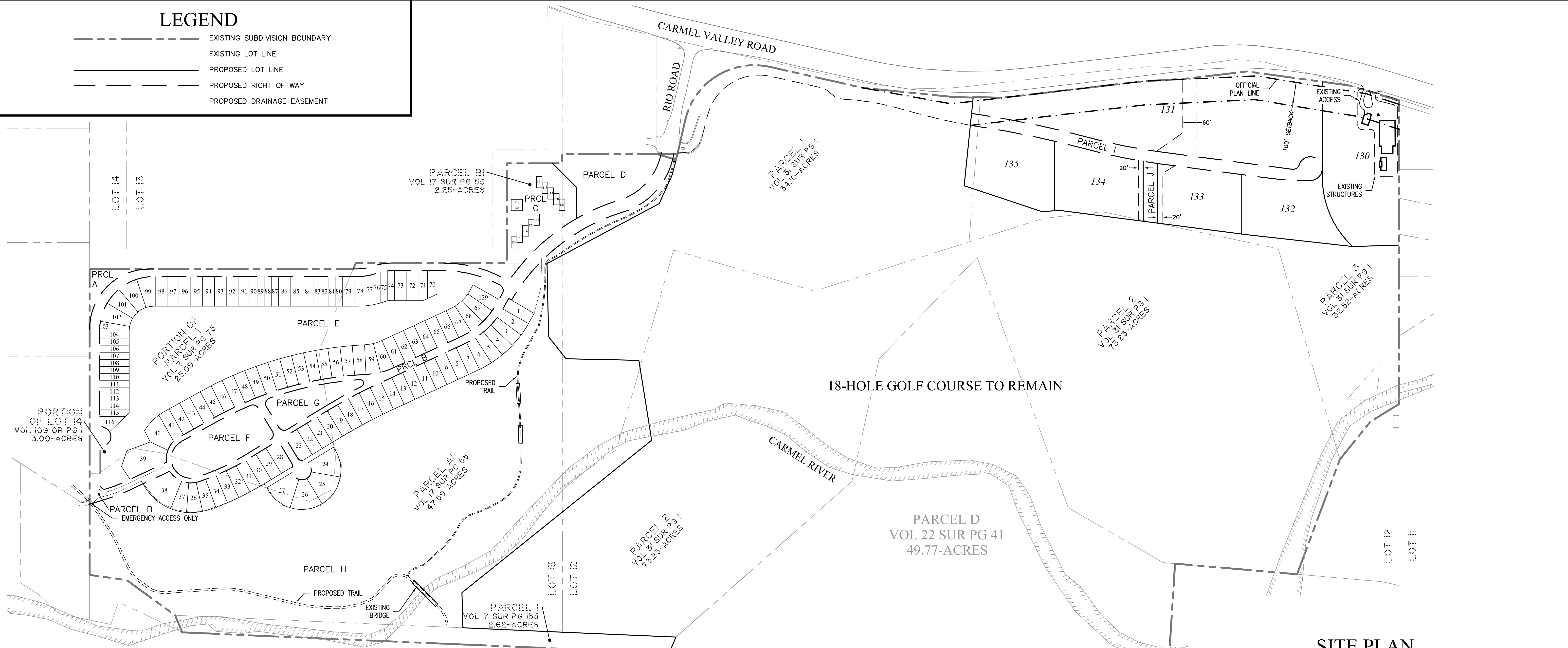


LEGEND

- EXISTING SUBDIVISION BOUNDARY
- - - EXISTING LOT LINE
- PROPOSED LOT LINE
- - - PROPOSED RIGHT OF WAY
- - - PROPOSED DRAINAGE EASEMENT



LOT SUMMARY

LOT #	DESCRIPTION	NUMBERS	ACRES
117-128	NEW LOTS CONDOMINIUMS	12	SEE PRCL C
70-71,74-77, 80-83,87-90, 103-116	NEW LOTS 30' X 120' MARKET RATE	28	2.5
SUBTOTAL			40 *
1-23,28-37, 41-69,72-73, 78-79,84-86, 91-102,129	NEW LOTS 50' X 120' MARKET RATE	82	11.9
24-27,38-40	NEW LOTS CUSTOM MARKET RATE	7	2.0
130	NEW LOTS HATTON RESIDENTIAL LOT	1	4.6
SUBTOTAL			90
NEW LOTS TOTAL			130

LOT #	RELOCATED LOTS **	PQP LOTS	NUMBERS	ACRES
131-135			5	20.0
SUBTOTAL			5	20.0

RELOCATED/NEW LOTS TOTAL 135 41.0

PARCEL SUMMARY

PARCEL	ACRES	USE
A	0.3	WELL SITE/DRAINAGE EASEMENT
B	5.3	ROADWAYS
C	1.9	CONDOMINIUMS
D	1.7	OPEN SPACE
E	9.5	COMMON AREA
F	1.7	COMMON AREA
G	0.9	COMMON AREA
H	39.4	OPEN SPACE/ CONSERVATION AND SCENIC EASEMENT/ DRAINAGE EASEMENT
I	1.8	ROADWAY
J	0.3	OPEN SPACE/ CONSERVATION AND SCENIC EASEMENT/ DRAINAGE EASEMENT
TOTAL		62.8

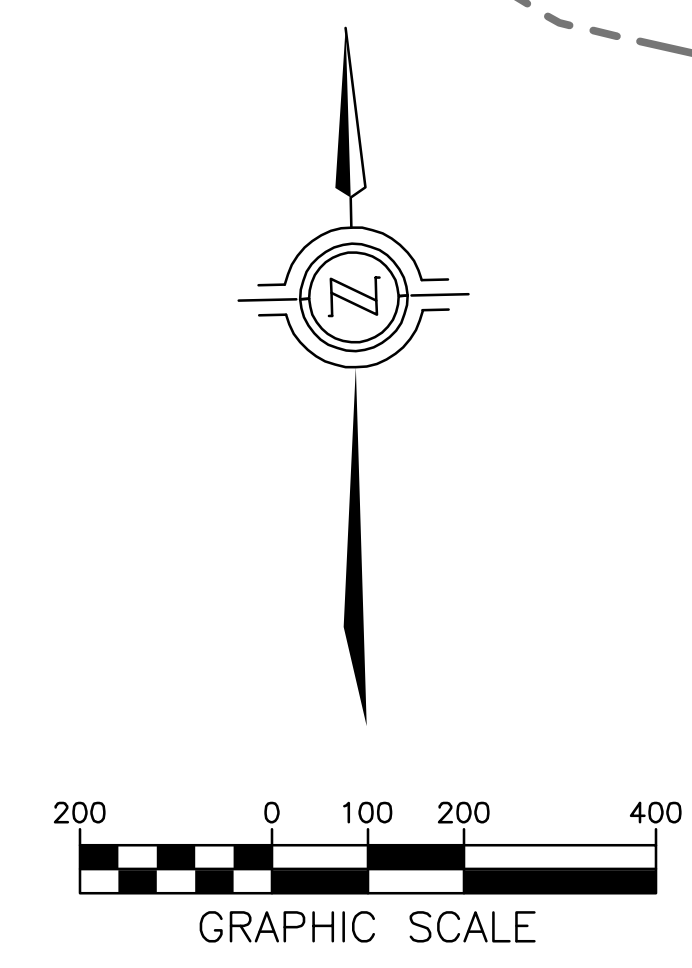
REMAINING PARCEL SUMMARY

PARCEL	ACRES	
ADJ 1	28.2	
ADJ 2	75.4	
ADJ 3	8.2	
D	49.8	
TOTAL		161.6

NOTE: ACREAGES ARE APPROXIMATE.

**SITE PLAN
130-UNIT PROJECT
ALTERNATIVE
RANCHO CAÑADA
VILLAGE**

MONTEREY COUNTY CALIFORNIA
NOVEMBER 2014



LS ENGINEERING AND SURVEYING, INC.
2460 Garden Road, Suite C, Monterey, California 93940
P: 831.655.2723 F: 831.655.3425
LondEngineers.com

Carmel Development Company
R. Alan Williams
Post Office Box 450
Carmel, California 93921
CA Lic. #84904
(831) 625-1066

* OF WHICH 26 WILL BE MODERATE INCOME
** RELOCATION OF 5 EXISTING LOTS FROM WEST SIDE